



THE WHITCOMB

from the Courtyard Collection

3 bedrooms, 2 Baths - 2,216 base square feet



The Whitcomb plan

Take in stunning views from the Great Room, open Kitchen, Owners Suite, and expansive Covered Porch.

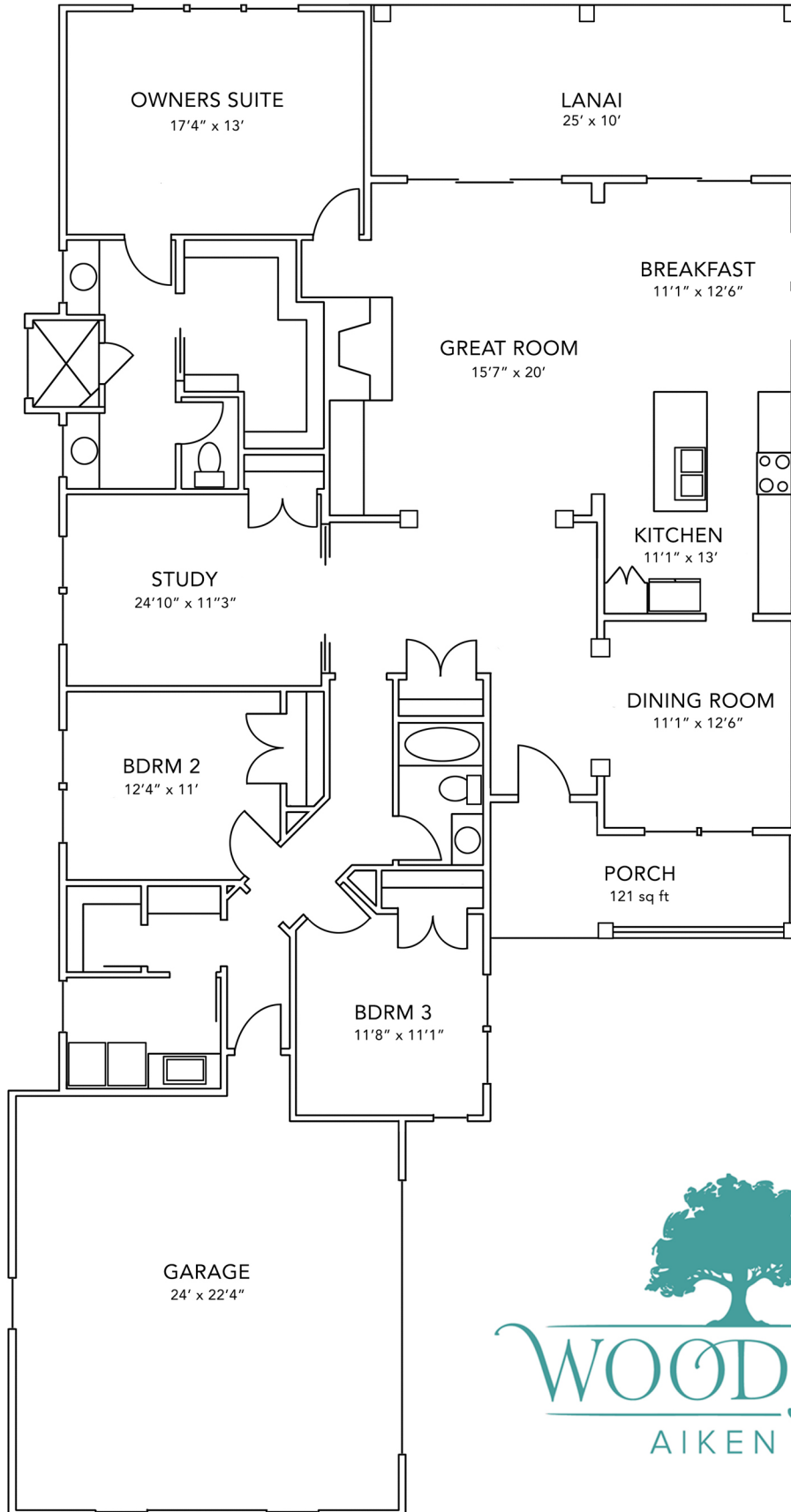
The 121 square foot Front Porch and 250 square Covered Rear Porch are perfect for entertaining outdoors.

Designed by John Tee, an Atlanta-based architect with extensive *Southern Living* home plan design experience.

Energy efficient features include Tech Shield roof sheathing, low-e Anderson vinyl windows and doors, a high efficiency HVAC system, and a "Home Tight" sealing package.

For more information, please call 800.648.3052 or visit us at www.woodsidecommunities.com

THE WHITCOMB



F12924

Measurements are subject to change

For more information, please call 800.648.3052 or visit us at www.woodsidecommunities.com