



THE POLO

from the Courtyard Collection

3 bedrooms, 2.5 Baths - 2,622 base square feet



The Polo plan

Beautifully appointed oversized Owners Suite features a vaulted tray ceiling, tremendous walk-in closet, split vanities, soaking tub, and walk-in shower.

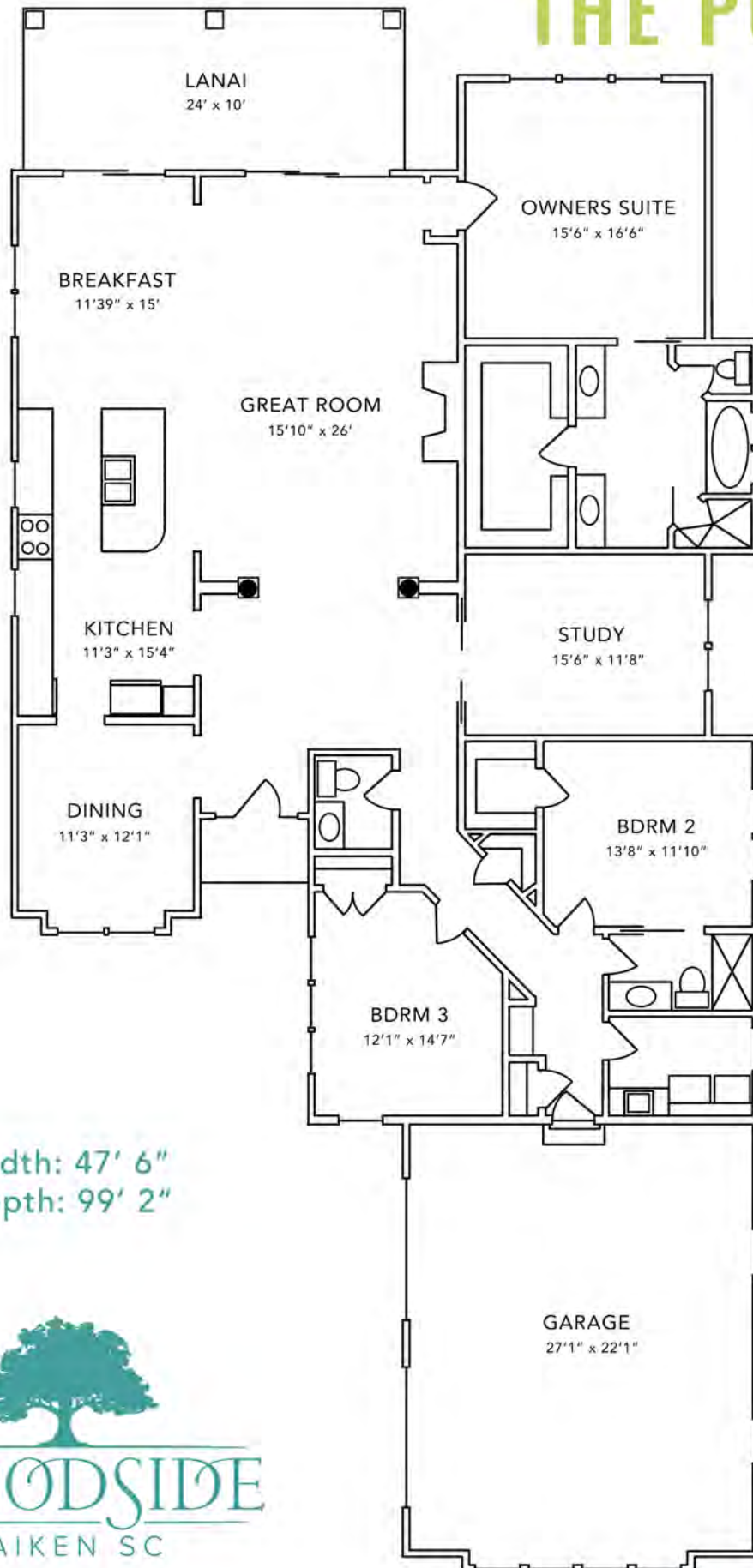
Gourmet cook's dream Kitchen includes an abundance of custom cabinetry, center island with sink and breakfast bar, granite countertops, and stainless steel appliances.

Rich hardwood flooring throughout the main living areas.

Ultra-high efficiency and "green" features include Tech Shield roof sheathing, Low-E windows and doors and 15 SEER HVAC systems with 95% efficiency rating.

For more information, please call 800.648.3052 or visit us at www.woodsidecommunities.com

THE POLO



Width: 47' 6"
Depth: 99' 2"



F062524

Measurements are subject to change

For more information, please call 800.648.3052 or visit us at www.woodsidecommunities.com