



ANDERSON FARMS

# THE HEARTHSTONE

3 bedrooms, 2.5 baths | 2,395 heated base square feet



## About Anderson Farms

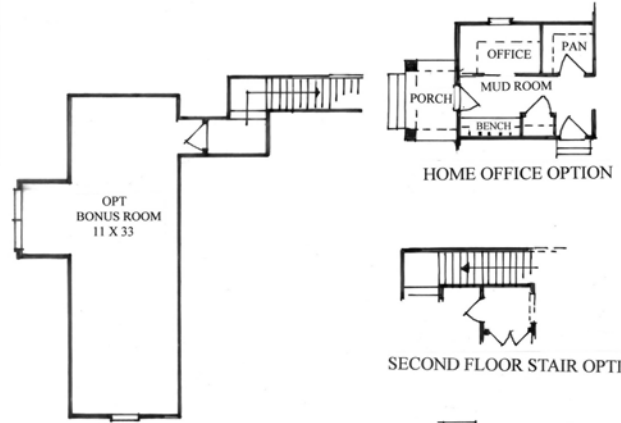
Sustainable living communities like Anderson Farms are hallmarked by a strong sense of community united through environmental sustainability. Here, neighbors are connected by their passion for self-sustained lifestyles, and often share in gardening, farming, community events, and more. Anderson Farms has committed itself to providing these opportunities for property owners through sustainable development with access to resort-style amenities and equestrian conveniences, from the comfort of a luxurious home crafted by *Southern Living* Custom Builder member Anderson Farms Homes.

For more information, please call 803.281.6120 or visit us at [www.andersonfarmsaiken.com](http://www.andersonfarmsaiken.com)

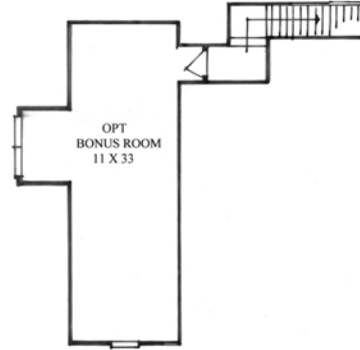
# THE HEARTHSTONE



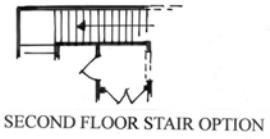
FIRST FLOOR PLAN  
HEATED SQ. FT 2395



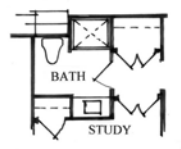
HOME OFFICE OPTION



SECOND FLOOR PLAN  
HEATED SQ. FT. 490



SECOND FLOOR STAIR OPTION



FULL BATH OPTION