



# THE COURTYARD II

from the Highlands Collection

4 bedrooms, 3 Baths - 3,216 base square feet



## The Courtyard II

A luxurious 3,216 square foot home plan with an expansive and dramatic main living area.

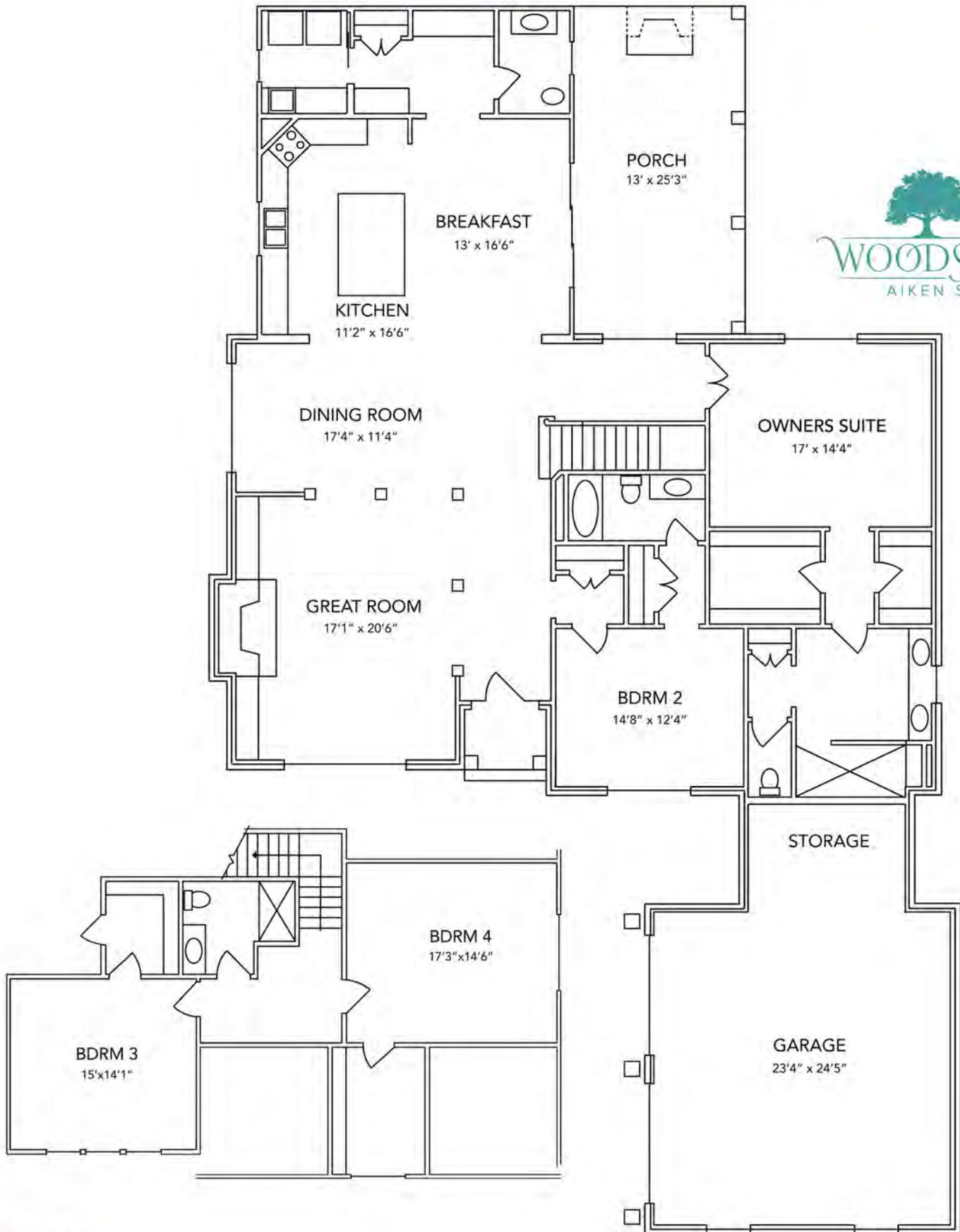
Beautifully arranged Main Level includes an open, light filled plan with the Kitchen, Breakfast Room, Dining Room, and Owners Bedroom situated around a luxurious covered porch with outdoor brick fireplace.

The Second Level consists of two beautiful bedrooms and a bathroom. An over-sized garage with storage adds to the convenience this plan offers.

Energy efficient features include upgraded insulation, "Home-Tight" sealing package, radiant barrier sheathing, 15 SEER HVAC units, and vinyl low-e windows and doors.

For more information, please call 800.648.3052 or visit us at [www.woodsidecommunities.com](http://www.woodsidecommunities.com)

# THE COURTYARD II



F062524

Measurements are subject to change

For more information, please call 800.648.3052 or visit us at [www.woodsidecommunities.com](http://www.woodsidecommunities.com)