



# THE ASHDALE

from the Classic Collection

3 bedrooms, 2.5 Baths - 2,646 base square feet



## The Ashdale

Designer features include dramatic ceilings: barreled ceiling in the entry Foyer and over Owners tub, painted ceiling in the Great Room, and vaulted tray ceiling in the Owners Bedroom.

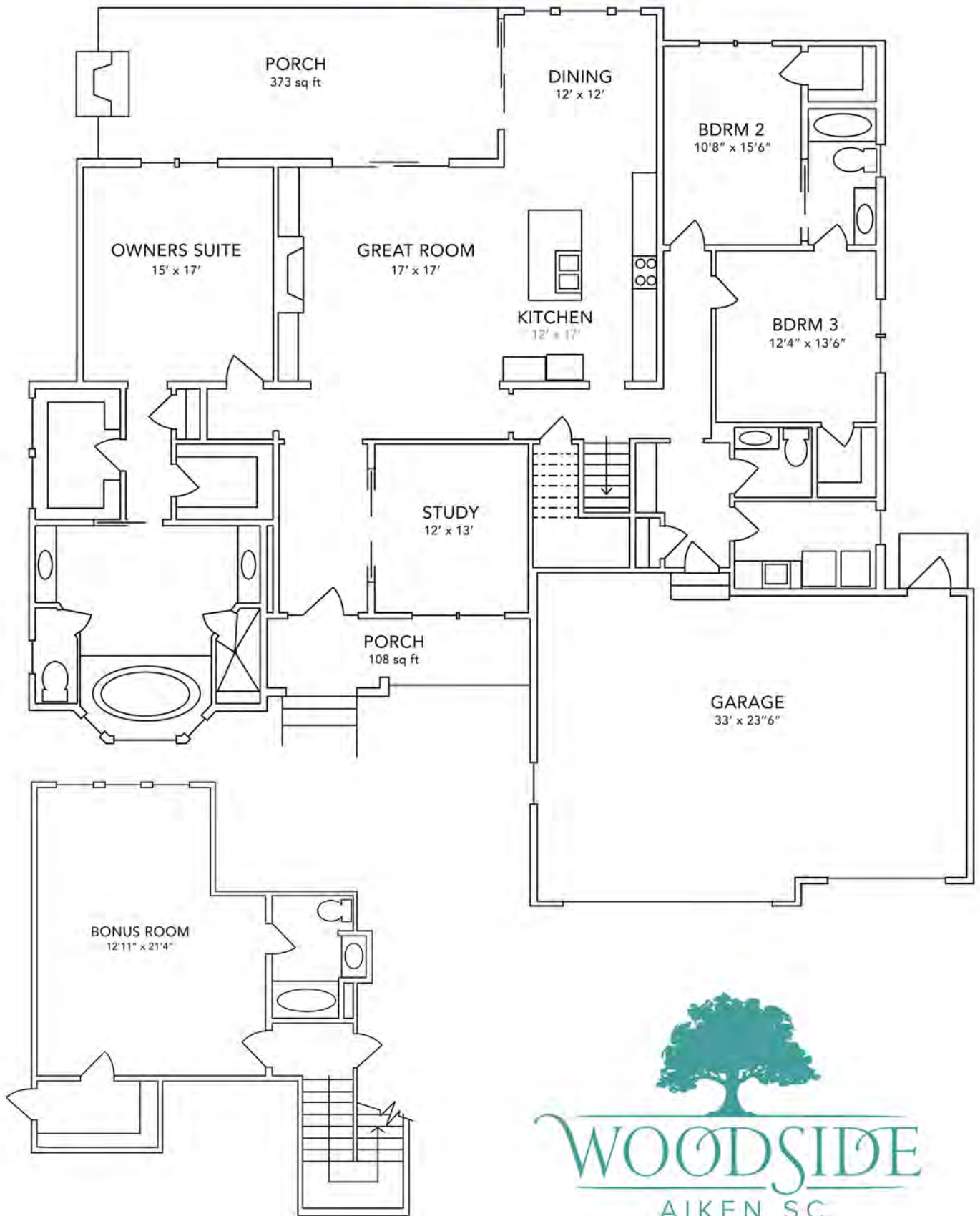
Granite countertops in the Kitchen, Owners Bath, and Powder Room, as well as a decorative hood and backsplash in the Kitchen highlight the elegance of this home.

Oversized Garage with Mud Room entry and generous closet spaces add to the value of this home.

Energy efficient features include upgraded insulation, "Home-Tight" sealing package, radiant barrier sheathing, 15 SEER HVAC units, and vinyl low-e windows and doors.

For more information, please call 800.648.3052 or visit us at [www.woodsidecommunities.com](http://www.woodsidecommunities.com)

# THE ASHDALE



F062524

Measurements are subject to change

For more information, please call 800.648.3052 or visit us at [www.woodsidecommunities.com](http://www.woodsidecommunities.com)